

Baynard Park Lagoon Inspection Report

May 24, 2020

Prepared For:

**Judy Mason
Atlantic States Management**

Summary of Methods:

Two Quality Lakes Inc. (QLI) staff walked all Baynard Park lagoons to qualitatively assess lagoon conditions with regard to Best Management Practices (BMPs) on April 24, 2020. Observations and recommendations for lagoon or BMP improvements were based on guidelines taught and promoted by Clemson University. Both staff are certified Clemson Master Pond Managers.

Baynard Park BMP Report – April 24th 2020

Lagoon #1

- East Bank has open PVC pipe in hole near bank. Recommend filling in hole to prevent possible erosion issue.

Lagoon #2

- Keep shoreline vegetation maintained
- Remove any woody plants (i.e. wax myrtles/willows) that may be growing along lagoon shoreline
- Entire shoreline is sloughed. Recommend reshaping/dredging shoreline and stabilizing bank with ShoreSox
- Water control structure clean and operating as designed from shore inspection

Lagoon #3

- West and South banks are sloughed (approximately 400 linear ft). Recommend reshaping/dredging shoreline and stabilizing bank with ShoreSox
- Water control structure clean and operating as designed from shore inspection

Lagoon #4

- Southeast bank sloughed (approximately 700 linear ft). Recommend reshaping/dredging shoreline and stabilizing bank with ShoreSox
- Bank near irrigation pump sloughed (approximately 50 linear ft). Recommend reshaping/dredging shoreline and stabilizing bank with ShoreSox

- Water control structure clean and operating as designed from shoreline inspection

Lagoon #5

- Willows and Wax Myrtles on lagoon bank in cord grass. Recommend removing any woody vegetation on pond bank in cord grass.

Lagoon #6

- North Bank – approximately 250 linear ft of bank erosion. Recommend stabilizing bank with ShoreSox
- South Bank – areas of bare ground that have potential for erosion issues. Recommend sodding over bare ground to prevent erosion.
- Water control structure clean and operating as designed from shoreline inspection

Lagoon #7

- West corner – remove vegetation and dredge/remove organic material that has accumulated in corner
- Remove woody vegetation present on lagoon edge/shoreline
- Active erosion and bare earth on lagoon banks. Recommend sodding banks to stabilize from erosion

Lagoon #8

- Bank vegetation needs to be removed on lagoon edge in front of compressor cabinet

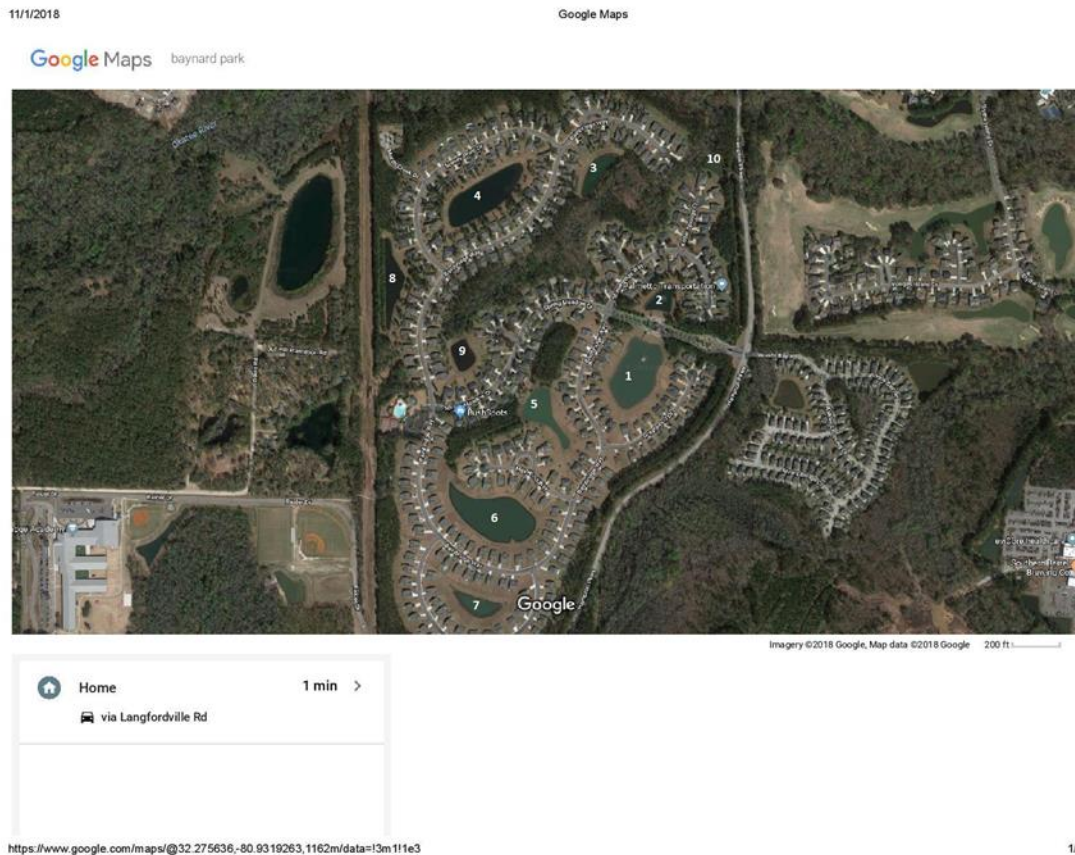
Lagoon #9

- Sloughed banks around entire lagoon. Recommend reshaping/dredging lagoon bank and stabilizing with ShoreSox

Lagoon #10

- Recommend removing willow growing on lagoon bank

All aeration systems need to be left on and running 24/7 March - November. Turning systems off at night will negate the purpose of the systems and may cause fish kills in lagoons



Summary of Findings:

When lagoons are inspected for BMP compliance, three primary components will be assessed: erosion or potential for erosion on lagoon banks, woody shrubs or trees growing on lagoon banks or in water conveyance structures or channels, and integrity of water flow in and out of the lagoons (primarily structural integrity of outflow/inflow devices and pipes). The majority of the opportunities at Baynard Park to improve BMP conditions for compliance include woody shrub/tree removal along lagoon shorelines, erosion control- turf install on bare shoreline areas, rebuilding and stabilization of eroded or sloughed shoreline (suggested tools to repair included ShoreSox to firmly rebuild and hold shoreline integrity). Structural integrity of inflow/outflow structures and spillways was not assessed. All of these components can reduce lagoon storage volumes and contribute to flooding or unstable shorelines adjacent to owners' lots.